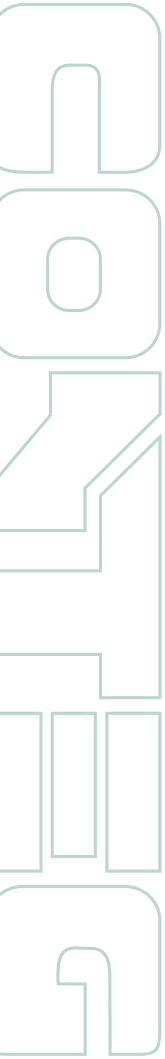
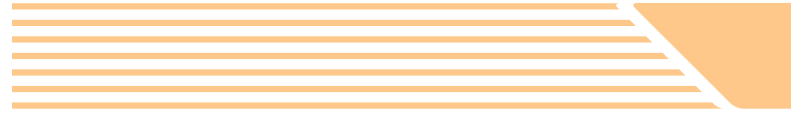


INDUSTRIAL • INNOVATIVE • INDIVIDUAL • INSPIRING

Compact enclosures



TO COMPLETE YOUR NETWORK

inTEG compact enclosures

Our compact inTEG enclosures have a smooth design thanks to the latest laser-welding technology. Their body provides high rigidity and is compatible with many applications in the industrial, electrical engineering and automation fields. Each of the enclosure's 54 dimensions are made with either plain or glazed doors. The range includes powder-coated stainless steel enclosures as well as stainless steel enclosures for applications that need more protection from the environment. The internal equipment can be installed quickly without the need of additional accessories.



MAIN ADVANTAGES

- Smooth design thanks to laser welding
- 54 dimensions from 300x200x155 mm up to 1400x1000x300 mm
- Single-door and double-door enclosures
- Materials: sheet steel, stainless steel 304 or 316L, powder-coated stainless steel
- Maximum dimensions available for mounting plate
- Stability and robustness
- High rigidity of rear panel
- Wide range of accessories
- Customized solutions – cutouts and holes according to your requirements before final surface finish
- Easily changeable left to right-hand door mounting
- Rear panel with holes ready for direct wall mounting
- Standard – mounting plate and full-gland plate for all types
- Wide selection of safety stickers
- Possibility of placing your logo or special label on enclosure according to your requirements

TECHNICAL SPECIFICATION

- IP66 dust and water protection – single-door enclosures
- IP55 dust and water protection – double-door enclosures
- Mechanical resistance IK10 (IK08 for enclosures with glazed door)
- RAL7035 standard color (other colors available upon request)
- PUR non-porous gasket on door(s)
- Zinc-plated mounting plate with labeled grids
- Simple change of door hinges from right to left
- 130° angle door opening (180° optional)



Online configurator at
www.conteg.com

Advantages and specifications

The inTEG compact enclosures are designed with regard to the user – practical and effective. Standard sizes and accessories are in stock, which allows us to minimize delivery time.

Easy and quick installation of accessories



Perforated mounting rails on door

- From enclosure height of 500 mm
- Easier installation of door components
- Increased rigidity of the door



Perforated mounting rails on side panels

- From enclosure depth of 250 mm
- Screwed to body of enclosure
- Comfort installation of components on side panels
- Perforations in 25 mm step



Zinc-plated mounting plate

- Labeled raster 50x50 mm
- Easy setting of installed components and DIN rails
- Maximum dimensions of mounting plate



Rear panel with mounting holes

- Standard for all type and dimensions
- Easy solution for direct wall mounting
- Possibility of pole mounting with special accessories

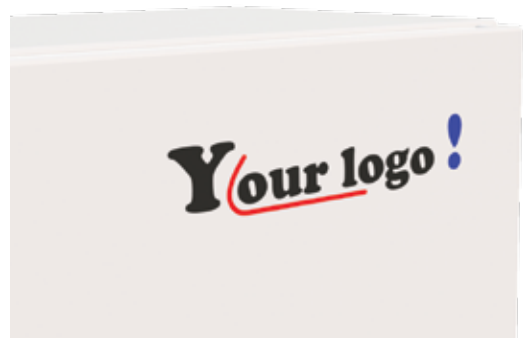
Customized solutions

In an effort to meet the increasing demands of our customers, we can make additional adjustments to enclosures according to individual request and requirements.



Individual cutouts and holes by laser

- Cutouts are done before the final surface finish to ensure the powder coating on the entire surface of the enclosure has the highest possible quality
- Enclosures can be individually customized by using our on-line configurator
- Prices for cutouts in steel and stainless steel are the same



Individual labeling

- Printed on adhesive foil
- Possibility of placing your logo or individual descriptions
- Full-color
- Maximum printing size 300x420 mm



Rain canopy

- Light construction – no extra weight for enclosure
- In combination with stainless steel powder-coated enclosure – solution for outdoor application

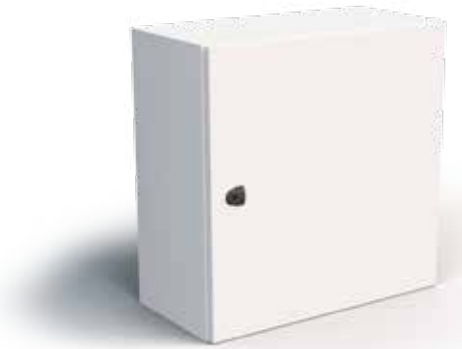


Wide selection of safety sticker

- Stickers are printed by UV LED technology, which ensure high-quality for lifetime use
- Customized dimensions and stickers available in different languages

inTEG Compact Enclosures							
Dimensions mm			Enclosure type/material				
Height	Width	Depth	Sheet steel	Glazed door	Outdoor*	Stainless steel 304*	Stainless steel 316L*
Single-door enclosure							
300	200	155	+	+	+	+	+
300	250	155	+	+	-	-	-
300	300	155	+	+	+	+	+
300	300	210	+	+	+	+	+
300	400	155	+	+	+	+	+
300	400	210	+	+	+	+	+
400	300	155	+	+	+	+	+
400	300	210	+	+	+	+	+
400	400	210	+	+	+	+	+
400	600	210	+	+	+	+	+
400	600	250	+	+	-	-	-
500	300	210	+	+	-	-	-
500	400	210	+	+	+	+	+
500	400	250	+	+	-	-	-
500	500	210	+	+	+	+	+
500	500	300	+	+	+	+	+
600	400	210	+	+	+	+	+
600	400	250	+	+	-	-	-
600	400	300	+	+	-	-	-
600	500	250	+	+	-	-	-
600	600	210	+	+	+	+	+
600	600	250	+	+	+	+	+
600	600	300	+	+	+	+	+
600	600	400	+	+	-	-	-
600	800	250	+	+	-	-	-
600	800	300	+	+	+	+	+
700	500	210	+	+	-	-	-
700	500	300	+	+	+	+	+
800	600	250	+	+	+	+	+
800	600	300	+	+	+	+	+
800	600	400	+	+	-	-	-
800	800	300	+	+	+	+	+
800	800	400	+	+	-	-	-
1 000	600	250	+	+	-	-	-
1 000	600	300	+	+	-	-	-
1 000	600	400	+	+	-	-	-
1 000	800	300	+	+	+	+	+
1 000	800	400	+	+	-	-	-
1 200	600	300	+	+	-	-	-
1 200	600	400	+	+	-	-	-
1 200	800	300	+	+	+	+	+
1 200	800	400	+	+	+	+	+
Double-door enclosure							
600	800	300	+	+	-	-	-
800	1 000	300	+	+	-	-	-
800	1 200	300	+	+	-	-	-
1 000	1 000	300	+	+	-	+	+
1 000	1 000	400	+	+	-	-	-
1 000	1 200	300	+	+	-	-	-
1 000	1 200	400	+	+	-	-	-
1 200	1 000	300	+	+	-	+	+
1 200	1 000	400	+	+	-	-	-
1 200	1 200	300	+	+	-	-	-
1 200	1 200	400	+	+	-	-	-
1 400	1 000	300	+	+	-	-	-

* Sale of stainless steel inTEG enclosures will start during April 2014



Sheet steel enclosure



Stainless steel enclosure



Enclosure with glazed door



Enclosure for outdoor application

Conteg, spol. s r.o.

Czech Republic Headquarters:

Na Vítězné pláni 1719/4

140 00 Prague 4

Tel.: +420 261 219 182

Fax: +420 261 219 192

Production plant in the Czech Republic:

K Silu 2179

393 01 Pelhřimov

Tel.: +420 565 300 300

Fax: +420 565 533 955

conteg@conteg.com

www.conteg.com

Local Branches/Offices

Austria: +43 170 659 0115

Benelux: +32 477 957 126

Eastern Europe / Nordics: +49 172 8484 346

France, Maghreb: +33 686 074 386

Germany / Switzerland: +49 170 523 4958

India: +91 991 6950 773

Middle East: +971 4445 2838

Russia, CIS: +7 495 967 3840

Saudi Arabia: +966 594 30 13 08

Ukraine: +380 674 478 240

Although this catalog was prepared, produced and checked with the best care, Conteg, spol. s r.o. cannot accept any liability for omissions or errors in this publication. Due to the continuous development and progress, Conteg, spol. s r.o. also reserves the right to change details and technical specifications of the products shown in this catalogue. Such changes along with eventual errors or printing errata shall not constitute grounds for compensation.