

**COMPACT  
DATA  
CENTER  
MODULAR  
CLOSED  
LOOP**

**CONTEG**

# Compact Data Centers

The Modular Closed Loop (MCL) is a specific, scalable non-IT infrastructure solution suitable for both smaller server rooms and large data centers that require zones with different operating parameters (temperature or heat load).

The MCL is a compact unit, completely insulated from the surrounding environment. It consists of Premium Server racks and CoolTeg Plus in-row cooling units. The front and rear doors of the racks are glass or full-metal and create an enclosed space for air circulation between the servers and the cooling unit.

The MCL is fully compatible with CoolTeg Plus CW (chilled water), DX (direct expansion) and XC (direct expansion with integrated compressor) cooling units. Any number of racks and cooling units can be combined in a single module. Our ex-

perts will design a solution to ensure maximum space capacity based on your requirements along with appropriate cooling performance including necessary redundancies.

The MCL system can be complemented with a number of safety features such as access control and monitoring system RAMOS, emergency opening system EOS, extinguishing system LES-RACK and more.

## Fiber Optic Cable Management System—**Optiway**

- Independent interconnection of all free-standing racks for safe management of optical cables



## Safety Features

- independent access control and monitoring system—**RAMOS**
- emergency opening system—**EOS**
- extinguishing system—**LES-RACK**
- IP40 rating  
(**IP54** available on request)

Illustration photo of 3 racks and 3 cooling units

## Premium Server **RSF** Free-standing Rack

- Fully configurable welded frame structure
- Load capacity of 1,500 kg

## CoolTeg Plus In-Row Cooling

- Highly energy-efficient CoolTeg Plus in-row cooling units in CW, DX or XC variants

# Modular Closed Loop

## Suitable for:

- Small and medium server rooms with heat loads of up to 35 kW per rack
- Data centers with zones requiring individualized operating parameters
- 42U to 48U—racks 600 mm or 800 mm wide—1,200 mm deep

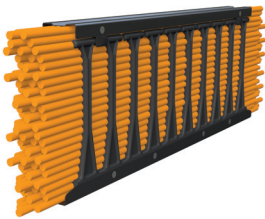
## Advantages:

- Easily scalable
- Does not require a raised floor
- Rack load capacity—1,500 kg
- Ability to monitor the status of the environment inside the rack



Air circulation inside the **MCL**

## Related Products



### Cable Management

The High Density series of cable management systems promotes precise cable management inside racks while observing the proper bending radii of modern data cables. The High Density cable management system is best complemented by the Optiway solution, which ensures safe routing of optical and metallic cables outside the rack itself. Our portfolio also includes products for standard cable management from cable loops to cable channels and individual holders.



### Local Extinguishing System

LES-RACK is an independent, fully automatic fire detection and extinguishing system. It is designed for direct installation into 19" racks with IP30 enclosure or higher. LES-RACK consists of a fully equipped automatic fire detection system and a control, evaluation and extinguishing unit. The system uses NOVEC™ 1230 fire extinguishing agent.



### Overheat Protection

The EOS (emergency opening system) coupled with RAMOS monitoring and access control system protects devices from overheating. If the RAMOS system detects overheating, the EOS opens the front and back doors of the rack to prevent potential damage of the devices. However, as with other types of data center arrangement, the best protection against overheating and damaging equipment inside is provided by a fully redundant cooling unit configuration.



### Intelligent and Basic Power Distribution Units (PDUs)

Product portfolio of intelligent and basic power distribution units includes basic PDUs without additional features as well as models enabling remotely monitoring power consumption via Ethernet and IP (monitored PDUs) or power distribution units with the additional option of controlling individual outlets or groups of outlets remotely through a data network (managed PDUs).

[www.conteg.com](http://www.conteg.com)

CONTEG, spol. s r.o.

Na Vitezne plani 1719/4  
140 00 Prague 4  
Czech Republic  
Tel.: +420 565 300 358

[conteg@conteg.com](mailto:conteg@conteg.com)