

Outdoor Cabinets

The best solution for all outdoor applications

CONTEG

Outdoor Cabinets

The advantage of double-walled aluminum cabinets is that it maintains a 10% lower internal temperature than a plastic or single-walled solution. In many applications, our customers do not have to invest in air-conditioning units at all, or they can save them by lowering the power of these devices and consequently the energy consumed for their operation.

You can order cabinets from our standard ranges to ensure quick delivery times. If you have special requirements, you can design these cabinets to your specifications. You can use our web configurator or contact our experienced sales representatives, who will gladly help you.

outTEG



outTEG LITE



inTEG WME-O



Material		Aluminum cover and roof Stainless steel frame and plinth	Aluminum	Stainless steel
Construction		Double-walled	Double-walled	Single-walled
IP rating		IP65	IP65	IP66
Mechanical resistance		IK10	IK10	IK10
Color		RAL 7035 for body RAL 7046 for roof and plinth	RAL 7035	RAL 7035
Surface		Powder coated	Powder coated	Powder coated
Dimensions	H	12, 16, 21, 25, 30, 34U	8, 12, 17U	300, 400, 500, 600, 700, 800, 1000, 1200 mm
	W	650, 800, 1000 mm	400, 600 mm	200, 300, 400, 500, 600, 800 mm
	D	400, 500, 600, 700, 800, 1000 mm	400, 500, 600 mm	155, 210, 250, 300, 400 mm

outTEG free-standing cabinets

Based on experience, we have developed an outTEG II Double series – a double-walled design with natural ventilation between the walls. Ventilation is made possible by perforations in the body parts of the cabinet.



Short lead time of standard sizes

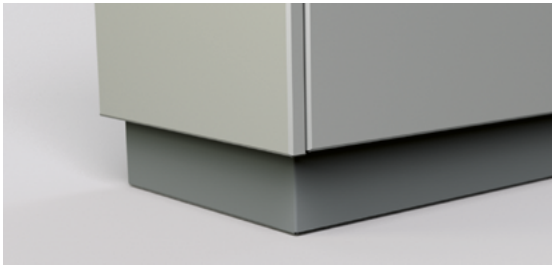
Selection of the best-selling sizes

Variants of side panels, solid or with cut-outs for installation of filter fan or cooling units

Suitable for projects where there are strict requirements for stable internal climate

On-line configurator at www.conteg.com/configurators

Main Advantages



Simple, useful, functional design

Highest protection against corrosion

Cabinet includes a plinth and roof

Welded stainless steel enclosure frame with 2mm material thickness

All removable parts are made of aluminum (door, rear/side panels, roof)

Polyester powder coat with UV protection

PUR non-porous gasket – suitable for extreme temperatures

IP65 dust and water protection

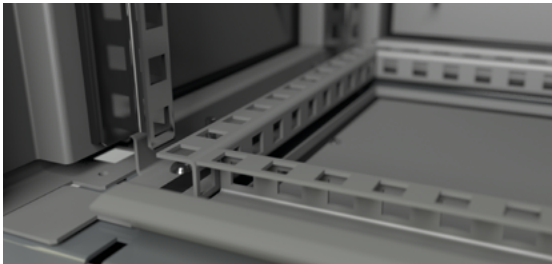
IK10 mechanical resistance – against severe damage

Vandal-proof

Compact design

Ready for crane transport

Earthquake zone rating



outTEG LITE pole mount cabinets

The outTEG LITE series brings you a double-walled design with the possibility of installation on a pole or wall. Natural ventilation is provided by air circulation between the walls.



Short lead time

Suitable for projects, where the installed equipment has low to medium heat dissipation and requires stable internal climate

Option of a cabinet equipped with a 100W thermo-electric unit

Main Advantages

Compact and light double-walled design

Highest protection against corrosion

Features integrated roof

Made of aluminum

Polyester powder coat with UV protection

PUR non-porous gasket – suitable for extreme temperatures

IP65 dust and water protection

IK10 mechanical resistance – against severe damage

Vandal-proof



inTEG WME-O wall mount cabinets

The inTEG WME-O series is a basic wall-mounted outdoor enclosure, single-walled.



- Short lead time
- Simple installation
- Smooth design

Main Advantages



- Compact wall mount cabinet
- Protection against corrosion
- Cabinets are made of stainless steel
- Polyester powder coat with UV protection
- PUR non-porous gasket – suitable for extreme temperatures
- IP66 dust and water protection
- IK10 mechanical resistance – against severe damage





www.conteg.com

CONTEG, spol. s r.o.

Headquarters:

Na Vitezne plani 1719/4
140 00 Prague 4
Czech Republic
Tel.: +420 261 219 182

Production plant:

K Silu 2179
393 01 Pelhřimov
Czech Republic
Tel.: +420 565 300 356

outdoor@conteg.com
www.conteg.com