



DATASHEET
Compact
Stainless Steel
Outdoor
Enclosures
WME-O

CONTEG

WME-O—COMPACT STAINLESS STEEL OUTDOOR ENCLOSURES



WME-O-060604

➤ **WME-O compact stainless steel outdoor enclosures** with surface finish resistant to UV radiation are ideal for outdoor installations and can be equipped with e.g. a roof to protect them from rain and sun rays. The structural design of this series offers high rigidity of the entire enclosure and the back panel. Manufacturing by laser welding technology lends the enclosures a clean design. On request, CONTEG can also make cut-outs and perforations required for installation of equipment into enclosures.

MAIN ADVANTAGES

- Single-door enclosure
- The doors are fitted with a polyurethane foam seal all around the perimeter and a rotary lock or 3-point locking system from a height of 1 000 mm
- Perforated mounting rails on the doors of cabinets 500 mm in height and higher
- Perforated mounting rails on the side panels of cabinets 250 mm in depth and deeper
- Mounting plate with a marked raster 50 × 50 mm
- Accessories for wall-mounting
- Degree of protection IP66
- Left/right door hinge replacement

COLOR:  RAL 7035

DESCRIPTION

- | | | | |
|---|---|--|---|
| <p>Material</p> <ul style="list-style-type: none"> • Enclosure: stainless steel 1.4016 (AISI 403), on request stainless steel 1.4301 (AISI 304) • Mounting plate: zinc-plated sheet steel <p>Enclosure surface finish</p> <ul style="list-style-type: none"> • Polyester powder coating with UV protection | <p>Color</p> <ul style="list-style-type: none"> • RAL 7035 for outdoor use <p>Degree of protection</p> <ul style="list-style-type: none"> • IP66 according to EN 60529 (the degree of protection may be reduced after mounting accessories) <p>Mechanical durability</p> <ul style="list-style-type: none"> • IK10 according to IEC 62262 | <p>Supply includes</p> <ul style="list-style-type: none"> • Single-door enclosure. The doors are equipped with a polyurethane foam seal all around the perimeter and a rotary lock or 3-point locking system from a height of 1 000 mm. • Perforated mounting rails on the doors of enclosures 500 mm in height and higher. | <ul style="list-style-type: none"> • Perforated mounting rails on the sides of enclosures 250 mm in depth and deeper • Mounting plate with a marked raster 50 × 50 mm • Accessories for wall-mounting • Clean design, without cable glands • Cut outs for installation in the CONTEG Modification Center |
|---|---|--|---|

WME-O—COMPACT STAINLESS STEEL OUTDOOR ENCLOSURES, SINGLE DOOR, HEIGHT 300–500 MM

		300	300	300	400	400	400	500
Enclosure	H (mm)	300	300	300	400	400	400	500
	W (mm)	200	300	400	300	300	400	400
	D (mm)	155	210	210	155	210	210	210
Mounting plate	H1 (mm)	270	270	270	370	370	370	470
	W2 (mm)	150	250	350	250	250	350	350
Material thickness (mm)	Enclosure	1,25	1,25	1,25	1,25	1,25	1,25	1,25
	Door	1,5	1,5	1,5	1,5	1,5	1,5	1,5
	Mounting plate	2	2	2	2	2	2,5	2,5
Quantity	Hinges	2	2	2	2	2	2	2
	Cam locks	1	1	1	1	1	1	1
	Bolts	4	4	4	4	4	4	4
Weight (kg)		3,9	6,1	7,7	6,9	7,6	9,5	11,3
Code	1 pc	WME-O-030215	WME-O-030321	WME-O-030421	WME-O-040315	WME-O-040321	WME-O-040421	WME-O-050421

ACCESSORIES

		–	–	–	–	–	–	–
Door-mounting rails	1 pc	–	–	–	–	–	–	ID-W-VD4
Rain canopy	1 pc	ID-W-R2015	ID-W-R3020	ID-W-R4020	ID-W-R3015	ID-W-R3020	ID-W-R4020	ID-W-R4020
Pole mounting brackets	1 set	ID-W-MP2	ID-W-MP3	ID-W-MP4	ID-W-MP3	ID-W-MP3	ID-W-MP4	ID-W-MP4

WME-O—COMPACT STAINLESS STEEL OUTDOOR ENCLOSURES, SINGLE DOOR, HEIGHT 500–800 MM								
Enclosure	H (mm)	500	500	600	600	600	600	800
	W (mm)	500	500	400	600	600	600	600
	D (mm)	210	300	300	210	300	400	250
Mounting plate	H1 (mm)	470	470	570	570	570	570	770
	W2 (mm)	450	450	350	550	550	550	550
Material thickness (mm)	Enclosure	1,25	1,25	1,5	1,5	1,5	1,5	1,5
	Door	1,5	1,5	1,5	1,5	1,5	1,5	2
	Mounting plate	2,5	2,5	2,5	2,5	2,5	2,5	3 F *
Quantity	Hinges	2	2	2	2	2	2	2
	Cam lock	1	1	2	2	2	2	2
	Bolts	4	4	4	4	4	4	4
Weight (kg)		13,7	15,5	16,8	20,3	22,8	25,9	29,2
Code	1 pc	WME-O-050521	WME-O-050503	WME-O-060403	WME-O-060621	WME-O-060603	WME-O-060604	WME-O-080625
ACCESSORIES								
Rails for interior installation	1 set	–	ID-W-H5	ID-W-H6	–	ID-W-H6	ID-W-H6	ID-W-H8
Door-mounting rails	1 set	ID-W-VD5	ID-W-VD5	ID-W-VD4	ID-W-VD6	ID-W-VD6	ID-W-VD6	ID-W-VD6
19" fixed extrusions	1 set	–	–	–	–	ID-W-U12	ID-W-U12	ID-W-U17
Plinth **	Front and rear	1 set	–	–	–	ID-W-SPF60	ID-W-SPF60	–
	Side	1 set	–	–	–	ID-W-SPS30	ID-W-SPS40	–
Rain canopy	1 pc	ID-W-R5020	ID-W-R5030	ID-W-R4030	ID-W-R6020	ID-W-R6030	ID-W-R6040	ID-W-R6025
Pole mounting brackets	1 set	ID-W-MP5	ID-W-MP5	ID-W-MP4	ID-W-MP6	ID-W-MP6	ID-W-MP6	ID-W-MP6

* 3 F—3 mm mounting plate with two bent edges.

** Plinth stainless steel, height 100 mm, RAL 7046.

WME-O—COMPACT STAINLESS STEEL OUTDOOR ENCLOSURES, SINGLE DOOR, HEIGHT 800–1200 MM								
Enclosure	H (mm)	800	800	800	1000	1000	1200	1200
	W (mm)	600	600	800	600	600	600	800
	D (mm)	300	400	300	300	400	300	400
Mounting plate	H1 (mm)	770	770	770	970	970	1170	1170
	W2 (mm)	550	550	750	550	550	550	750
Material thickness (mm)	Enclosure	1,5	1,5	1,5	1,5	1,5	1,5	1,5
	Door	2	2	2	2	2	2	2
	Mounting plate	3 F *	3 F *	3 FF *	3 F *	3 F *	3 F *	3 FF *
Quantity	Hinges	2	2	2	3	3	3	3
	Cam lock	2	2	2	–	–	–	–
	3-point locking system	–	–	–	+	+	+	+
	Bolts	4	4	4	4	4	6	6
Weight (kg)		31,7	35,2	40,2	38,4	42,4	45	62
Code	1 pc	WME-O-080603	WME-O-080604	WME-O-080803	WME-O-100603	WME-O-100604	WME-O-120603	WME-O-120804
ACCESSORIES								
Rails for interior installation	1 set	ID-W-H8	ID-W-H8	ID-W-H8	ID-W-H10	ID-W-H10	ID-W-H12	ID-W-H12
Door-mounting rails	1 set	ID-W-VD6	ID-W-VD6	ID-W-VD8	ID-W-VD6	ID-W-VD6	ID-W-VD6	ID-W-VD8
19" fixed extrusions	1 set	ID-W-U17	ID-W-U17	ID-W-U17**	ID-W-U21	ID-W-U21	ID-W-U25	ID-W-U25**
Plinth ***	Front and rear	1 set	ID-W-SPF60	ID-W-SPF60	ID-W-SPF80	ID-W-SPF60	ID-W-SPF60	ID-W-SPF80
	Side	1 set	ID-W-SPS30	ID-W-SPS40	ID-W-SPS30	ID-W-SPS30	ID-W-SPS40	ID-W-SPS40
Rain canopy	1 pc	ID-W-R6030	ID-W-R6040	ID-W-R8030	ID-W-R6030	ID-W-R6040	ID-W-R6030	ID-W-R8040
Pole mounting brackets	1 set	ID-W-MP6	ID-W-MP6	–	ID-W-MP6	ID-W-MP6	ID-W-MP6	–

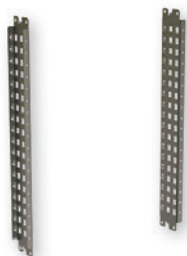
* 3 F—3 mm mounting plate with two bent edges. 3 FF—3 mm mounting plate with four bent edges.

** Order also bracket ID-W-UB.

*** Plinth stainless steel, height 100 mm, RAL 7046.

ACCESSORIES

RAILS FOR INTERIOR INSTALLATION



- Material: 2mm zinc-plated sheet steel with 25 mm perforation
- Rail width: 75 mm
- Mounting: onto interior rails, which are part of the enclosure
- Application: for distributors 250 mm deep and deeper and 400 mm in high and higher
- Supply includes: 2 mounting rails and accessories

Code	For enclosure height (mm)	Package *
ID-W-H5	500	1 set
ID-W-H6	600	1 set
ID-W-H7	700	1 set
ID-W-H8	800	1 set
ID-W-H10	1000	1 set
ID-W-H12	1200	1 set

* 1 set—2 pieces.

19" FIXED EXTRUSIONS



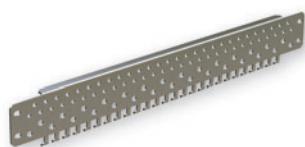
- Material: 2mm zinc-plated sheet steel
- Rail width: 56 mm
- Mounting: onto interior rails, which are part of the enclosure or onto the wall-mounting bracket ID-W-UD for enclosures 800 mm in width
- Application: for enclosures 250 mm deep and deeper and 600 and 800 mm wide
- Supply includes: 19" fixed extrusions and mounting accessories

Code	For enclosure height (mm)	Package *
ID-W-U12	600 (12U)	1 set
ID-W-U17	800 (17U)	1 set
ID-W-U21	1000 (21U)	1 set
ID-W-U25	1200 (25U)	1 set

* 1 set—2 pieces.

For enclosure width 800 mm, it's necessary to order the ID-W-UB wall-mounting brackets, packing contains 4 pcs.

DOOR-MOUNTING RAILS



- Material: 2mm zinc-plated sheet steel
- Rail width: 61 mm (including door-mounting rails)
- Mounting: onto rails for interior installation, which are part of the enclosure door
- Application: for enclosures 500 mm high and higher
- Supply includes: 2 pcs door-mounting rails and mounting accessories

Code	For enclosure width (mm)	Package *
ID-W-VD3	300	1 set
ID-W-VD4	400	1 set
ID-W-VD5	500	1 set
ID-W-VD6	600	1 set
ID-W-VD8	800	1 set

* 1 set—2 pieces.

LOCKS/LOCK INSERTS



Double bar



Square



Triangular

Code	Typ	Package
ID-W-INLK	T handle with lock, key 5333, chrome-plated zamak	1 set*
ID-W-INLK1	Lock, key 444, chrome-plated zamak	1 set*
ID-W-INLK2	Lock, unique key, chrome-plated zamak	1 set*
ID-W-INLK3	Lock, key 5333, chrome-plated zamak	1 set*
ID-W-INLKE1	Zámek VM1, chrome-plated zamak	1 set*
ID-W-IND3	3 mm "Double bit", black zamak	1 pc
ID-W-IND5	5 mm "Double bar", black zamak	1 pc
ID-W-INS6	6 mm square, black zamak	1 pc
ID-W-INS7	7 mm square, black zamak	1 pc
ID-W-INS8	8 mm square, black zamak	1 pc
ID-W-INT7	7 mm triangular, black zamak	1 pc
ID-W-INT8	8 mm triangular, black zamak	1 pc
ID-W-INT9	9 mm triangular, black zamak	1 pc

* Complete set of metal lock with key.

WALL-MOUNTING BRACKETS



- Material: 3 mm stainless steel
- Load: 100 kg
- Package includes: wall-mounting brackets and all necessary assembly parts for mounting to the enclosure

Code	Package
ID-W-WB	4 pcs

PLINTH



- Height: 100 mm
- Material: 2 mm stainless steel 1.4016 (AISI 403)
- Surface finish: polyester powder coating
- Color: RAL 7046, RAL 7035
- For complete you have to order ID-W-SPSxx and ID-W-SPFxx
- Package includes: plinths and all necessary assembly parts

STAINLESS STEEL PLINTH—SIDE KIT

Code	For enclosure depth (mm)	Color	Package
ID-W-SPS30	300	RAL 7046	1 set
ID-W-SPS40	400	RAL 7046	1 set
ID-W-SPS30G	300	RAL 7035	1 set
ID-W-SPS40G	400	RAL 7035	1 set

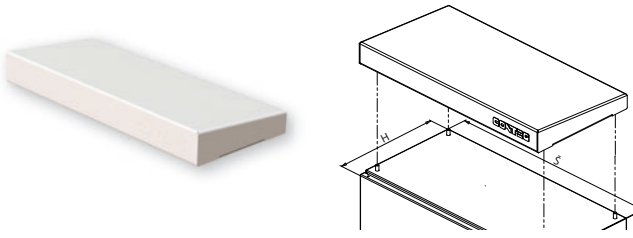
1 set includes: 2× side part, mounting accessories.

STAINLESS STEEL PLINTH—FRONT AND REAR KIT

Code	For enclosure width (mm)	Color	Package
ID-W-SPF60	600	RAL 7046	1 set
ID-W-SPF80	800	RAL 7046	1 set
ID-W-SPF60G	600	RAL 7035	1 set
ID-W-SPF80G	800	RAL 7035	1 set

1 set includes: 1× front part, 1× rear part, mounting accessories.

RAIN CANOPY



- Material: 2 mm aluminum sheet AlMg3
- Surface finish: polyester-powder coat
- Color: RAL 7035
- Mounting: direct on the top, 4× M6 screws
- Optional direction of the roof slope
- Cut-outs for installation in CONTEG Modification Center
- Package includes: rain canopy and all necessary assembly parts

Code	For enclosure W×D (mm)
ID-W-R2015	200 × 155
ID-W-R3015	300 × 155
ID-W-R3020	300 × 210
ID-W-R4015	400 × 155
ID-W-R4020	400 × 210
ID-W-R4030	400 × 300
ID-W-R5020	500 × 210
ID-W-R5030	500 × 300
ID-W-R6020	600 × 210
ID-W-R6025	600 × 250
ID-W-R6030	600 × 300
ID-W-R6040	600 × 400
ID-W-R8030	800 × 300
ID-W-R8040	800 × 400

POLE-MOUNTING BRACKETS



- Material: 2 mm stainless steel
- Installation: for poles with diameter up to 250 mm
- Load: 200 kg
- Package includes: pole-mounting brackets and all necessary assembly parts (2 profile rails, 2 clamping straps (l=850 mm), 8 set: screws M8×12, self-locking nuts and washers adhesion)

Code	For enclosure width (mm)
ID-W-MP2	200
ID-W-MP3	300
ID-W-MP4	400
ID-W-MP5	500
ID-W-MP6	600

DOOR STOP



- Material: 2 mm zinc-plated sheet steel
- Usage: available for enclosures of minimum height 500 mm and depth 250 mm
- Package includes: door stop and all necessary assembly parts

Code	Package
ID-W-DS	1 pc

DOOR SWITCH



- Material—brackets: 2 mm zinc-plated sheet steel
- Door switch: IP65, plastic, 1NO + 1 NC, PG13,5, -25 °C to +70 °C
- Usage: available for enclosures of minimum height 500 mm and depth 250 mm
- Package includes: door switch and all necessary assembly parts

Code	Package
ID-W-DC	1 pc

POCKET FOR DOCUMENTS



- Material: ABS
- Color: RAL 7035
- Dimensions: 234 × 241 × 31 mm (H × W × D)
- Mounting: with self-adhesive tape
- Package includes: plastic pocket for documents and adhesive tape

Code	Package
ID-PO-A4	1 pc

LIGHTING UNIT



- Protection degree: IP20
- Mounting: on mounting plate or inner side rails
- LED technology, 12 light spots
- Dimensions: 400 × 26 × 27 mm (W × H × D)
- Package includes: lighting unit and interconnection cables
- Bracket for installation on mounting plate. Depth adjustment is possible.

Code	Description	Package
ID-W-L	3W, 230 W, 50 Hz	1 pc

EARTHING



- ID-W-EK: complete earthing kit for enclosure
- ID-W-EW68/EW88/EW8816: 300 mm cable length with crimped lugs
- Set includes: nuts, screws for earthing door(s), enclosure and mounting plate

Code	Description	Package
ID-W-EK	Complete earthing kit WME	1 set *
ID-W-EW68	Grounding wires M6, M8 (door, enclosure), cross-section 10 mm ²	10 pc
ID-W-EW88	Grounding wires M8, M8 (enclosure, mounting plate), cross-section 10 mm ²	10 pc
ID-W-EW8816	Grounding wires M8, M8 (enclosure, mounting plate), cross-section 16 mm ²	10 pc

* Set includes: nuts, screws for earthing door(s), enclosure and mounting plate

BAYING KIT FOR INTEG WME



- Sealing material: polyethylene foam PNO1
- Sealing: 15 mm width and 10 mm thick
- Meets protection degree IP55
- Cutouts in CONTEG Modification Center
- Package includes: Baying kit and all necessary assembly parts

Code	Minimum dimensions of enclosure panel H × D (mm)	External dimension of gasket H × W (mm)	Maximal cut-out H × W (mm)	Package
ID-W-ROW4030	400 × 300	320 × 220	240 × 140	1 set
ID-W-ROW4040	400 × 400	320 × 320	240 × 240	1 set
ID-W-ROW6025	600 × 250	520 × 170	440 × 90	1 set
ID-W-ROW6030	600 × 300	520 × 220	440 × 140	1 set
ID-W-ROW6040	600 × 400	520 × 320	440 × 240	1 set
ID-W-ROW7025	700 × 250	620 × 170	540 × 90	1 set
ID-W-ROW7030	700 × 300	620 × 220	540 × 140	1 set
ID-W-ROW7040	700 × 400	620 × 320	540 × 240	1 set

CABLE GLANDS AND NUTS WITH PG/METRIC THREAD



- Material: polyamide PA6, sealing CR (neoprene)
- Protection degree: IP68
- Color: RAL 7035

Code	Description	Thread size	Ø cable (mm)	Package
ORO-PG7N	Cable entry Pg7	Pg7	2,5 – 6,5	10 pcs
ORO-PG9N	Cable entry Pg9	Pg9	3 – 8	5 pcs
ORO-PG11N	Cable entry Pg11	Pg11	4 – 10	5 pcs
ORO-PG13N	Cable entry Pg13	Pg13	5,5 – 12	5 pcs
ORO-PG16N	Cable entry Pg16	Pg16	8,5 – 14	5 pcs
ORO-PG21N	Cable entry Pg21	Pg21	11 – 18	5 pcs
ORO-PG29N	Cable entry Pg29	Pg29	17 – 25	5 pcs
ORO-PG36N	Cable entry Pg36	Pg36	22 – 33	1 pc
ORO-PG42N	Cable entry Pg42	Pg42	28 – 38	1 pc
ORO-PG48N	Cable entry Pg48	Pg48	32 – 44	1 pc
ORO-ZPG7N	Plastic nut Pg7	Pg7	–	10 pcs
ORO-ZPG9N	Plastic nut Pg9	Pg9	–	5 pcs
ORO-ZPG11N	Plastic nut Pg11	Pg11	–	5 pcs
ORO-ZPG13N	Plastic nut Pg13	Pg13	–	5 pcs
ORO-ZPG16N	Plastic nut Pg16	Pg16	–	5 pcs
ORO-ZPG21N	Plastic nut Pg21	Pg21	–	5 pcs
ORO-ZPG29N	Plastic nut Pg29	Pg29	–	5 pcs
ORO-ZPG36N	Plastic nut Pg36	Pg36	–	1 pc
ORO-ZPG42N	Plastic nut Pg42	Pg42	–	1 pc
ORO-ZPG48N	Plastic nut Pg48	Pg48	–	1 pc
ORO-M12N	Cable entry M12×1,5	M12×1,5	2,5 – 6,5	10 pcs
ORO-M16N	Cable entry M16×1,5	M16×1,5	4,5 – 10	5 pcs
ORO-M20N	Cable entry M20×1,5	M20×1,5	7 – 13	5 pcs
ORO-M25N	Cable entry M25×1,5	M25×1,5	10 – 17	5 pcs
ORO-M32N	Cable entry M32×1,5	M32×1,5	17 – 25	5 pcs
ORO-ZM12N	Plastic nut M12×1,5	M12×1,5	–	10 pcs
ORO-ZM16N	Plastic nut M16×1,5	M16×1,5	–	5 pcs
ORO-ZM20N	Plastic nut M20×1,5	M20×1,5	–	5 pcs
ORO-ZM25N	Plastic nut M25×1,5	M25×1,5	–	5 pcs
ORO-ZM32N	Plastic nut M32×1,5	M32×1,5	–	5 pcs

MEMBRANE ENTRY



- Material: polyamid/elastomer, UL-94 Vo, self-extinguishing
- Protection: IP64
- Instalation: cut-outs into cable glands
- Cut-outs for installation in CONTEG Modification Center
- Package includes: membrane 1 pc

Code	Dimensions W x D (mm)	Cables	Package
ID-W-ME24/19	142 × 44	12× max Ø 6,5 mm; 7× Ø 2,1 mm	1 pc
ID-W-ME24/48	142 × 44	48× max Ø 6,5 mm	1 pc

Do you need a customized solution?

Use services of our **CONTEG Modification Center**.



➤ Individual orders are fulfilled in the **modification center, which is a part of a modern industrial enterprise in Pelgrimov**. The center also has a MODCentrum 29 CNC milling machine. We can cut holes for filter fans, coolers, control panels, and buttons. The cabinets can be made of sheet steel, stainless steel (AISI 304 and 316L) or aluminum.

Cutouts can be made on flat removable parts of the rack walls (doors, cable entries, side panels, roofs and mounting plates), as well as in welded monolithic cabinets.



For more information please contact our sales or technical team at www.conteg.com/contacts

FILTER FANS



MAIN ADVANTAGES

- Quick assembly without screws and tools into a square cut-out, easy to mount with highly elastic clips
- Easy filter insert replacement from the outside without tools
- Possible to change airflow direction
- Airflow up to 800 m³/h
- Can be mounted in an enclosure with a sheet thickness of 1-2.5 mm
- IP 54 standard degree of protection
- Side and top ventilator placement
- Operating temperature range -10 °C up to +70 °C
- Polyurethane foam sealing around the whole perimeter
- Resistance against UV radiation
- Holes for installation in the CONTEG Modification Center

DESCRIPTION

- Plastic parts made of ABS/PC mix, all parts are self-extinguishing according to UL 94V-0
- Standard color RAL 7035 (different color on request)
- Filter inserts made of synthetic fibres of class G3 according to EN

- 779 and class G4 according to EN 779 and UL 900 class 2 self-extinguishing in class F1 according to DIN 53 438
- Filter inserts are cleaned by washing, compressed air and banging

- Encapsulated fan ball bearings
- IP54 standard degree of protection EN 60529 and NEMA 12 according to UL 50
- IP55 settable (according to EN 60529)

- IP56 when using protective cover against splashing water
- EMC version available on request

Fans

Code	Airflow	Dimensions H × W × D	Voltage **	Frequency	Outlet filter grid	Cut-out dimensions	Degree of protection
ID-EF-01-4	12/15 m ³ /h	106.5 × 106.5 × 59.9 mm	230 VAC	50/60 Hz	ID-EF-01	92 × 92 mm	IP54
ID-EF-01-1	15 m ³ /h	106.5 × 106.5 × 59.9 mm	24 VDC	–	ID-EF-01	92 × 92 mm	IP54
ID-EF-04-4	45/50 m ³ /h	150 × 150 × 65.5 mm	230 VAC	50/60 Hz	ID-EF-03	125 × 125 mm	IP54
ID-EF-04-1	47 m ³ /h	150 × 150 × 65.5 mm	24 VDC	–	ID-EF-03	125 × 125 mm	IP54
ID-EF-10-4	100/110 m ³ /h	203.9 × 203.9 × 87.5 mm	230 VAC	50/60 Hz	ID-EF-05	177 × 177 mm	IP54
ID-EF-10-1	100 m ³ /h	203.9 × 203.9 × 87.5 mm	24 VDC	–	ID-EF-05	177 × 177 mm	IP54
ID-EF-23-4	230/270 m ³ /h	250 × 250 × 115.3 mm	230 VAC	50/60 Hz	ID-EF-07	223 × 223 mm	IP54
ID-EF-22-1	225 m ³ /h	250 × 250 × 115.3 mm	24 VDC	–	ID-EF-07	223 × 223 mm	IP54
ID-EF-52-4	520/580 m ³ /h	325 × 325 × 150.7 mm	230 VAC	50/60 Hz	ID-EF-09	291 × 291 mm	IP54
ID-EF-71-4	710/800 m ³ /h	325 × 325 × 149 mm	230 VAC	50/60 Hz	ID-EF-09	291 × 291 mm	IP54
ID-EFT-42-4 *	420/490 m ³ /h	324 × 324 × 94 mm	230 VAC	50/60 Hz	ID-EF-09	fan 175 × 175 mm/grid 291 × 291 mm	IP54
ID-EO-TC	Thermostat for cooling	55 × 33 × 43 mm	250 VAC/10 A	–	–	–	IP20

* Top version.

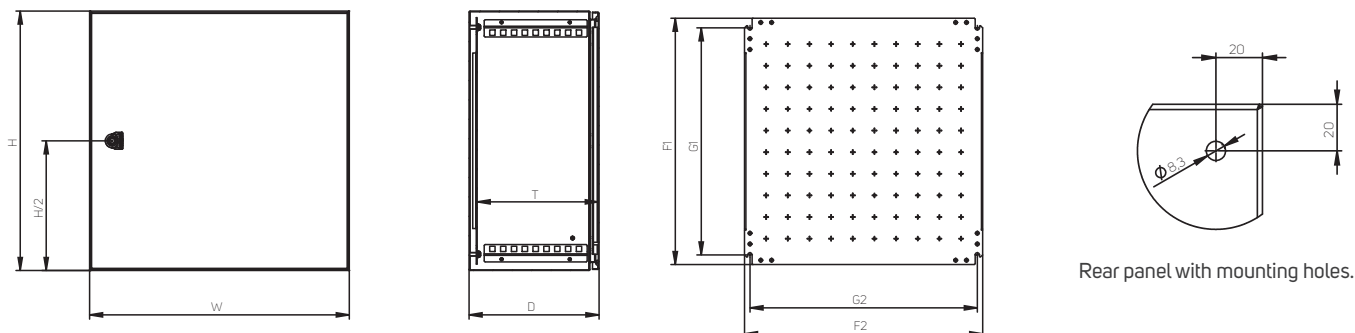
** Other input voltage options available upon request.



For more detailed information, please refer to the product catalog "Climate control solutions" at www.conteg.com or contact our sales representatives.

TECHNICAL DRAWINGS

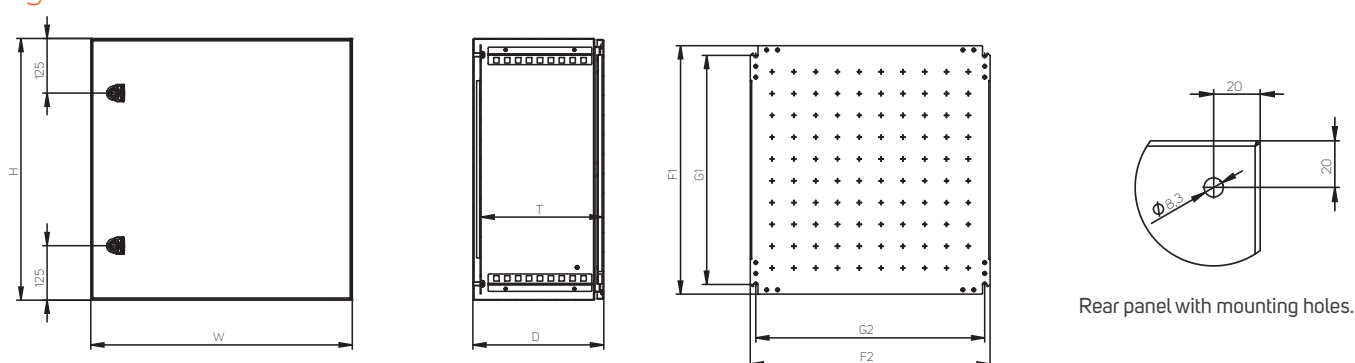
WME-O—compact stainless steel outdoor enclosures—
single-door with one cam lock



Code	Height (mm)		Width (mm)		Depth (mm)		Mounting plate (mm)				Material thickness (mm)		
	H	W	D	T*	F1	F2	G1	G2	Enclosure	Door	Mounting plate		
WME-O-030215	300	200	155	135	270	150	225	125	1,25	1,5	2,0		
WME-O-030321	300	300	210	190	270	250	225	225	1,25	1,5	2,0		
WME-O-030421	300	400	210	190	270	350	225	325	1,25	1,5	2,0		
WME-O-040315	400	300	155	135	370	250	325	225	1,25	1,5	2,0		
WME-O-040321	400	300	210	190	370	250	325	225	1,25	1,5	2,0		
WME-O-040421	400	400	210	190	370	350	325	325	1,25	1,5	2,5		
WME-O-050421	500	400	210	190	470	350	425	325	1,25	1,5	2,5		
WME-O-050521	500	500	210	190	470	450	425	425	1,25	1,5	2,5		
WME-O-050503	500	500	300	280	470	450	425	425	1,25	1,5	2,5		
WME-O-060403	600	400	300	280	570	350	525	325	1,50	2,0	2,5		
WME-O-060621	600	600	210	190	570	550	525	525	1,50	2,0	2,5		
WME-O-060603	600	600	300	280	570	550	525	525	1,50	2,0	2,5		
WME-O-060604	600	600	400	380	570	550	525	525	1,50	2,0	2,5		

* T indicates the depth between the mounting plate and the inside of the door, door trim reduces this value by 17 mm and lock by 31 mm.

WME-O—compact stainless steel outdoor enclosures—
single-door with two cam locks

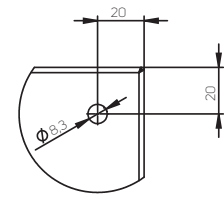
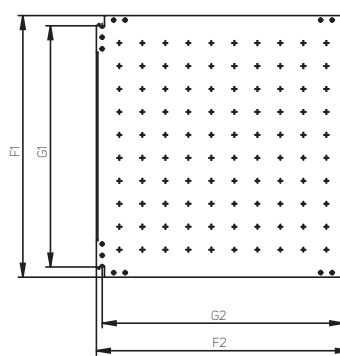
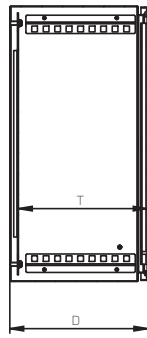
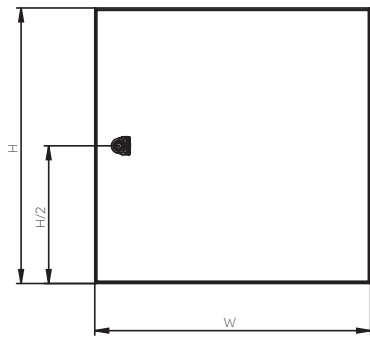


Code	Height (mm)		Width (mm)		Depth (mm)		Mounting plate (mm)				Material thickness (mm)		
	H	W	D	T***	F1	F2	G1	G2	Enclosure	Door	Mounting plate		
WME-O-080625	800	600	250	230	770	550	725	525	2,0	2,0	3 F*		
WME-O-080603	800	600	300	280	770	550	725	525	2,0	2,0	3 F*		
WME-O-080604	800	600	400	380	770	550	725	525	2,0	2,0	3 F*		
WME-O-080803	800	800	300	280	770	750	725	725	2,0	2,0	3 FF**		

* 3 F—3 mm mounting plate with 2 bent edges. ** 3 FF—3 mm mounting plate with 4 bent edges.

*** T indicates the depth between the mounting plate and the inside of the door, door trim reduces this value by 17 mm and lock by 31 mm.

WME-O—compact stainless steel outdoor enclosures— single-door with 3-point lock system



Rear panel with mounting holes.

Code	Height (mm)		Width (mm)		Depth (mm)		Mounting plate (mm)				Material thickness (mm)		
	H	W	D	T***	F1	F2	G1	G2	Enclosure	Door	Mounting plate		
WME-O-100603	1000	600	300	280	970	550	925	525	2,0	2,0	3 F*		
WME-O-100604	1000	600	400	380	970	550	925	525	2,0	2,0	3 F*		
WME-O-120603	1200	600	300	280	1170	550	1125	525	2,0	2,0	3 F*		
WME-O-120804	1200	800	400	380	1170	750	1125	725	2,0	2,0	3 FF**		

* 3 F—3 mm mounting plate with 2 bent edges.

** 3 FF—3 mm mounting plate with 4 bent edges.

*** T indicates the depth between the mounting plate and the inside of the door, door trim reduces this value by 17 mm and lock by 31 mm.

HEAT LOSS DISPERSION

WME-O—compact stainless steel outdoor enclosures,
measuring inside enclosure, $\Delta T = 15 \text{ K}$

Code	H (mm)	W (mm)	D (mm)	Thickness of material (mm)		Surface (m ²)	Effective area without rear panel (m ²)	Heating dissipation (W)
				Body	Door			
WME-O-030215	300	200	155	1,25	1,50	0,275	0,215	14,0
WME-O-030321	300	300	210	1,25	1,50	0,432	0,342	21,8
WME-O-030421	300	400	210	1,25	1,50	0,534	0,414	27,3
WME-O-040315	400	300	155	1,25	1,50	0,457	0,337	24,1
WME-O-040321	400	300	210	1,25	1,50	0,534	0,414	27,3
WME-O-040421	400	400	210	1,25	1,50	0,656	0,496	34,1
WME-O-050421	500	400	210	1,25	1,50	0,778	0,578	40,8
WME-O-050521	500	500	210	1,25	1,50	0,920	0,670	48,8
WME-O-050503	500	500	300	1,25	1,50	1,100	0,850	56,4
WME-O-060403	600	400	300	1,50	1,50	1,080	0,840	54,5
WME-O-060621	600	600	210	1,50	1,50	1,224	0,864	65,4
WME-O-060603	600	600	300	1,50	1,50	1,440	1,080	74,3
WME-O-060604	600	600	400	1,50	1,50	1,680	1,320	84,2
WME-O-080625	800	600	250	1,50	2,00	1,660	1,180	87,8
WME-O-080603	800	600	300	1,50	2,00	1,800	1,320	93,6
WME-O-080604	800	600	400	1,50	2,00	2,080	1,600	105,2
WME-O-080803	800	800	300	1,50	2,00	2,240	1,600	118,2
WME-O-100603	1000	600	300	1,50	2,00	2,160	1,560	113,3
WME-O-100604	1000	600	400	1,50	2,00	2,480	1,880	126,5
WME-O-120603	1200	600	300	1,50	2,00	2,520	1,800	133,0
WME-O-120804	1200	800	400	1,50	2,00	3,520	2,560	183,9



CONTEG, spol. s r.o.

Na Vitezne plani 1719/4

140 00 Prague 4

Czech Republic

Tel.: +420 565 300 358

conteg@conteg.com

www.conteg.com

CONTEG