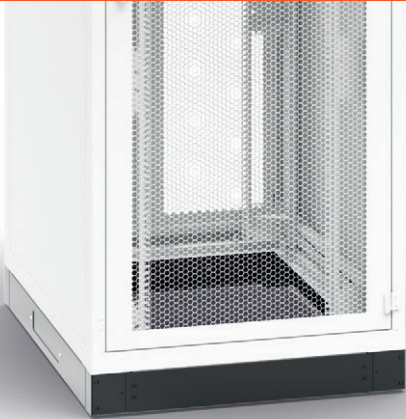




# DATASHEET

## Modular Plinths

# MODULAR PLINTHS



Example of a 800 × 1000 mm modular plinth 100 mm high. See image below.

**Plinths** are installed as both an aesthetic and stabilizing element instead of feet or castors. When a filter is used, the plinth supplies a sufficient amount of filtered air and can also be used for storing cables.

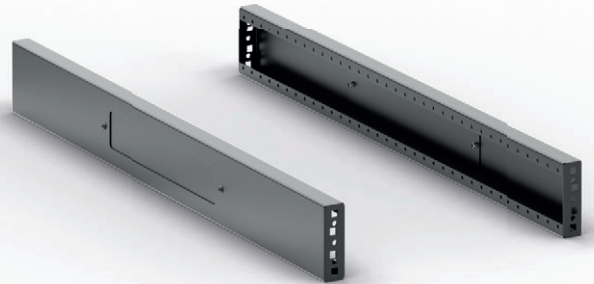
- Used with PREMIUM and iSEVEN rack series (RDF, RSF, RSB, RI7 and RM7)
- Height: 100 mm
- Delivered unassembled; assembly hardware and instructions included
- Consists of:
  - Set of corners and front/rear panels
  - Set of side panels

COLOR:  RAL 9005  RAL 7035

## SET OF PLINTH CORNERS WITH FRONT/REAR PANELS + SET OF SIDE PANELS



DP-PR-L80 set



DP-P-S100 set



DP-PR-L80 + DP-P-S100

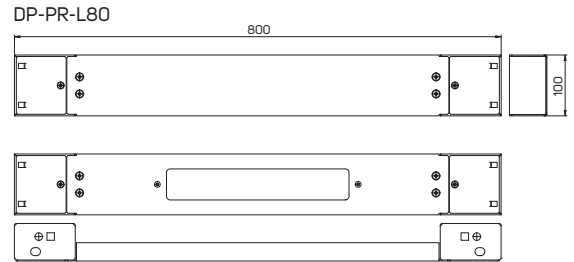
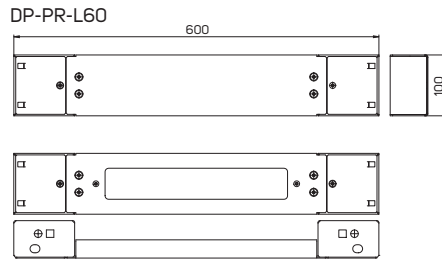
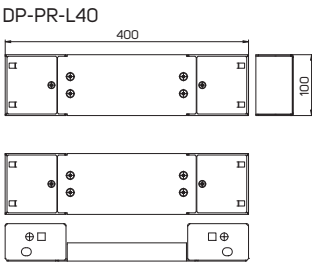
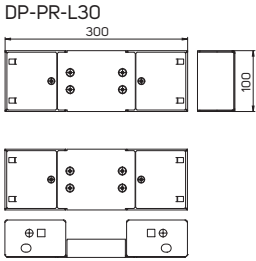
## SET OF CORNERS WITH FRONT/REAR PANELS

- Set of two plinth panels with corners for all racks
- Size corresponding to the width of the rack or CoolTEG unit
- Load rating: 1700 kg
- Height: 100 mm

Code	Description	Width (mm)	Package *
DP-PR-L30	Plinths for racks width 300 mm; incl. front and rear panels with corners, mounting kit, height 100 mm	300	1 set
DP-PR-L40	Plinths for racks width 400 mm; incl. front and rear panels with corners, mounting kit, height 100 mm	400	1 set
DP-PR-L60	Plinths for racks width 600 mm; incl. front and rear panels with corners, mounting kit, height 100 mm	600	1 set
DP-PR-L80	Plinths for racks width 800 mm; incl. front and rear panels with corners, mounting kit, height 100 mm	800	1 set

\* Package includes:

- 2x corners with blank panel, mounting kit
- 2x corners with panel with cable entry, mounting kit



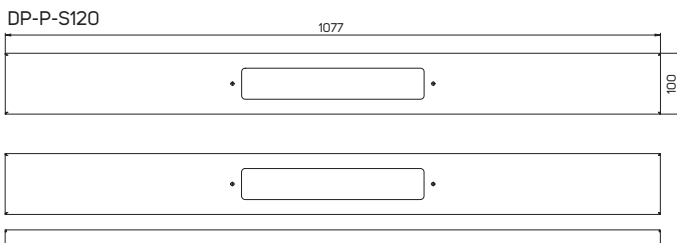
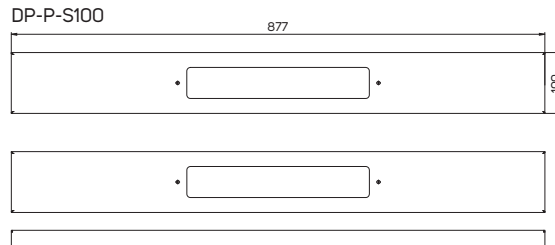
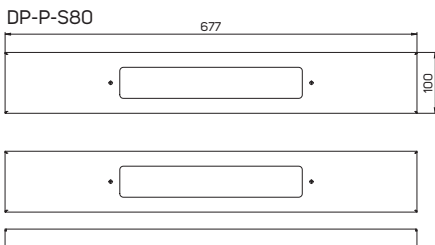
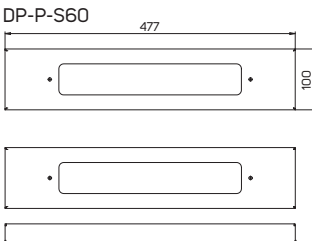
## SET OF SIDE PANELS

- Set of two plinth panels for all racks
- Size corresponding to the depth of the rack or CoolTEG unit
- Height: 100 mm

Code	Description	Depth (mm)	Package **
DP-P-S60	Set of two side panels for plinth DP-PR-L, rack depth 600 mm, height 100 mm	600	1 set
DP-P-S80	Set of two side panels for plinth DP-PR-L, rack depth 800 mm, height 100 mm	800	1 set
DP-P-S100	Set of two side panels for plinth DP-PR-L, rack depth 1 000 mm, height 100 mm	1 000	1 set
DP-P-S120	Set of two side panels for plinth DP-PR-L, rack depth 1 200 mm, height 100 mm	1 200	1 set

\*\* Package includes:

- 2x side plinth panels with cable entry, mounting kit



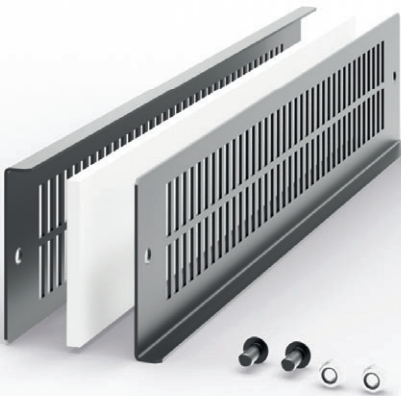
## ADJUSTABLE FEET FOR PLINTH

Code	Description	Package
DP-PR-L-A	Adjustable feet for plinth DP-PR-Lxx	4 pcs



## SET OF FRAMES WITH FILTERS

Code	Description	Package
DP-P-F	Set of frames with filters for plinth side panels DP-P-Sxx	2 pcs





**CONTEG, spol. s r.o.**

**Headquarters:**

Na Vitezne plani 1719/4  
140 00 Prague 4  
Czech Republic

**Production plant:**

K Silu 2179  
393 01 Pelhrimov  
Czech Republic

Tel.: +420 565 300 362

[conteg@conteg.com](mailto:conteg@conteg.com)

[www.conteg.com](http://www.conteg.com)

**CONTEG**